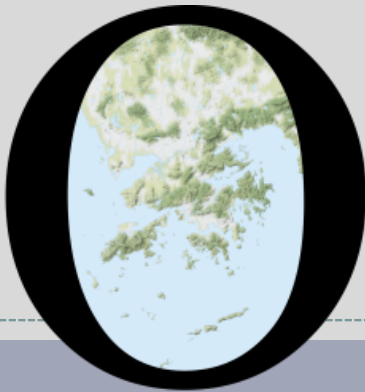


POP



HONG KONG PUBLIC OPINION PROGRAM

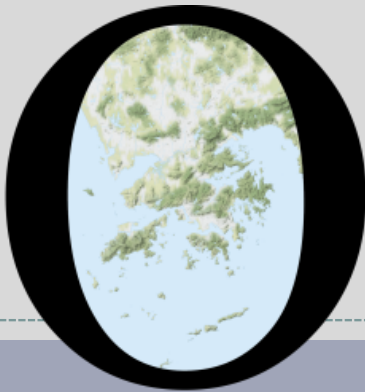
HONG KONG PUBLIC OPINION RESEARCH INSTITUTE

香港民意研究所 之 香港民意研究計劃

Latest Tracking Poll Results

November 2, 2021

POP



HONG KONG PUBLIC OPINION PROGRAM

HONG KONG PUBLIC OPINION RESEARCH INSTITUTE

香港民意研究所 之 香港民意研究計劃

限聚指數

Group Gathering Prohibition Index

2/11/2021

樣本資料 - 限聚指數基準調查

Contact Information - Group Gathering Prohibition Index Benchmark Survey

3

	香港民研意見群組成員 HKPOP Panel
調查日期 Survey date	18/10 15:00 – 25/10 15:00
調查方法 Survey method	以電郵接觸群組成員，並於網上完成調查 Online survey
訪問對象 Target population	十二歲或以上的香港市民 Hong Kong residents aged 12+
總成功樣本 Total sample size	5,974
回應比率 Response rate	6.6%
抽樣誤差 Sampling error	95% 置信水平，百分比誤差 +/-1% Sampling error of percentages at +/-1% at 95% confidence level
加權方法 Weighting method	按照1) 政府統計處提供的全港人口年齡及性別分佈統計數字、各區議會人口數字； 2) 選舉事務處提供的區議會選舉結果；3) 常規調查中的特首評分分佈數字，以 「反覆多重加權法」作出調整。 The figures are rim-weighted according to 1) gender-age distribution of Hong Kong population and by District Councils population figures from Census and Statistics Department; 2) Voting results of District Councils Election from Registration and Electoral Office; 3) rating distribution of Chief Executive from regular tracking surveys.

限聚指數

Group Gathering Prohibition Index

4

- **最新調查日期 Latest survey date: 18-25/10/2021 (N=5,974)**
- **上次調查日期 Last survey date: 13-20/9/2021 (N=6,210)**
- **上上次調查日期 Second last survey date: 16-23/8/2021 (N=7,456)**

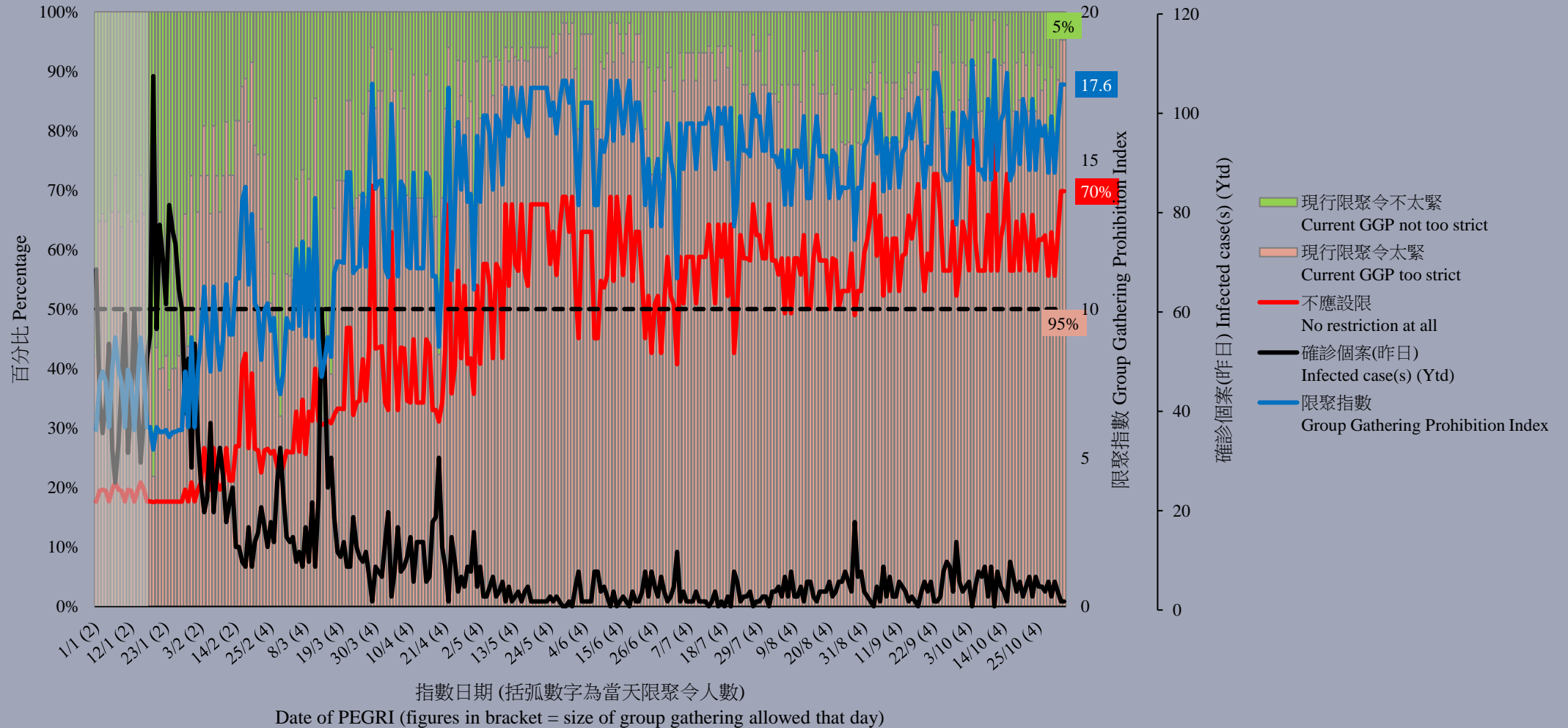
意見題目	Opinion Questions
<p>你認為香港應否無條件全面撤銷「限聚令」？</p> <ul style="list-style-type: none">▪ 應該無條件撤銷「限聚令」▪ 不應該，應視乎疫情而定▪ 不知道／很難說 <p>[追問沒有選擇應該“無條件撤銷「限聚令」”者]</p> <p>你認為每天新增確診個案數應是多少，才適合將「限聚令」訂於2人？</p> <p>你認為每天新增確診個案數應是多少，才適合將「限聚令」訂於4人？</p> <p>你認為每天新增確診個案數應是多少，才適合將「限聚令」訂於8人？</p> <p>你認為每天新增確診個案數應是多少，才適合將「限聚令」訂於16人？</p> <p>你認為感染個案清零多少天後，限聚令應該全面撤銷？</p> <p>請於以下欄位列舉你認為合適的 [個案數 及 限聚人數] 組合.....</p>	<p>Do you think the regulation prohibiting gatherings of more than a specific number of people in public places should be completely lifted unconditionally in Hong Kong?</p> <ul style="list-style-type: none">▪ Yes, the ban should be lifted unconditionally▪ No, it should depend on the epidemic situation▪ Don't know / hard to say <p>[For respondents NOT answering “Yes, the ban should be lifted unconditionally”]</p> <p>How many newly confirmed cases each day should there be before it would be appropriate to prohibit gatherings of more than 2 people?</p> <p>How many newly confirmed cases each day should there be before it would be appropriate to prohibit gatherings of more than 4 people?</p> <p>How many newly confirmed cases each day should there be before it would be appropriate to prohibit gatherings of more than 8 people?</p> <p>How many newly confirmed cases each day should there be before it would be appropriate to prohibit gatherings of more than 16 people?</p> <p>After how many days of zero infection do you think the group gathering ban should be lifted altogether?</p> <p>Please list combinations of [number of cases & number of people allowed in gatherings] that you think is appropriate in the field below:</p>

調查結果 - 限聚接受程度

Survey Result – Group Gathering Prohibition Acceptance Level

5

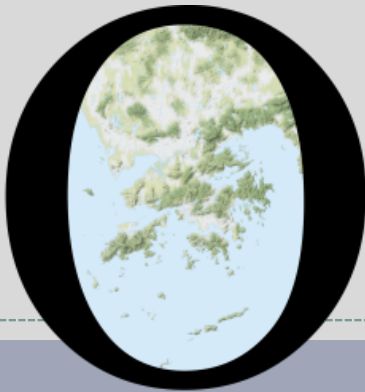
限聚接受程度 Group Gathering Prohibition Acceptance Level



香港教育中心商會副主席任偉豪指出：「安心出行昨天開始在大部份政府相關處所開始強制使用，令到不少長者與低收入人士大出血，有錢買手機的就要花錢買手機，沒有錢買手機的就要到超市或領展的街市捱貴餸。在長期已清零的時候再進一步收緊防疫措施，用意是在展示權力，還是在為健康碼鋪路呢？」

Vice Chairman of The Hong Kong Chamber of Education Centres Yam Wai Ho observed, “LeaveHomeSafe began to be used in most government-related places yesterday, causing heavy costs for elderly and low-income people. They need to buy new mobile phones, or else go to the supermarkets or wet markets under Link REIT and suffer from more expensive food. As there are zero local cases for a long time, is the intention to further tighten the epidemic prevention measures to show power or to pave the way for the health code system?”

POP



HONG KONG PUBLIC OPINION PROGRAM

HONG KONG PUBLIC OPINION RESEARCH INSTITUTE

香港民意研究所 之 香港民意研究計劃

Latest Tracking Poll Results

November 2, 2021

Contact Information

8

- Date of survey: 18-22/10/2021
- Survey method: Random telephone survey conducted by real interviewers
- Target population: Cantonese-speaking Hong Kong residents aged 18 or above
- Sample size: 1,000 (including 500 landline and 500 mobile samples)
- Effective response rate: 52.2%
- Sampling error: Sampling error of ratings not more than +/-0.23 at 95% conf. level
- Weighting method: Rim-weighted according to figures provided by the Census and Statistics Department. The gender-age distribution of the Hong Kong population came from “Mid-year population for 2020”, while the educational attainment (highest level attended) distribution and economic activity status distribution came from “Women and Men in Hong Kong - Key Statistics (2020 Edition)”.

Survey Topic

9

- Appraisals of Social Policies
 - Rehabilitation services for people with disabilities
 - Family and child welfare services
 - Medical and health policies
 - Tertiary education policies
 - Services for the elderly
 - Social security policies
 - Basic education policies
 - Labour policies
 - Services for young people
 - Housing policies

Survey Result - Appraisals of Social Policies

10

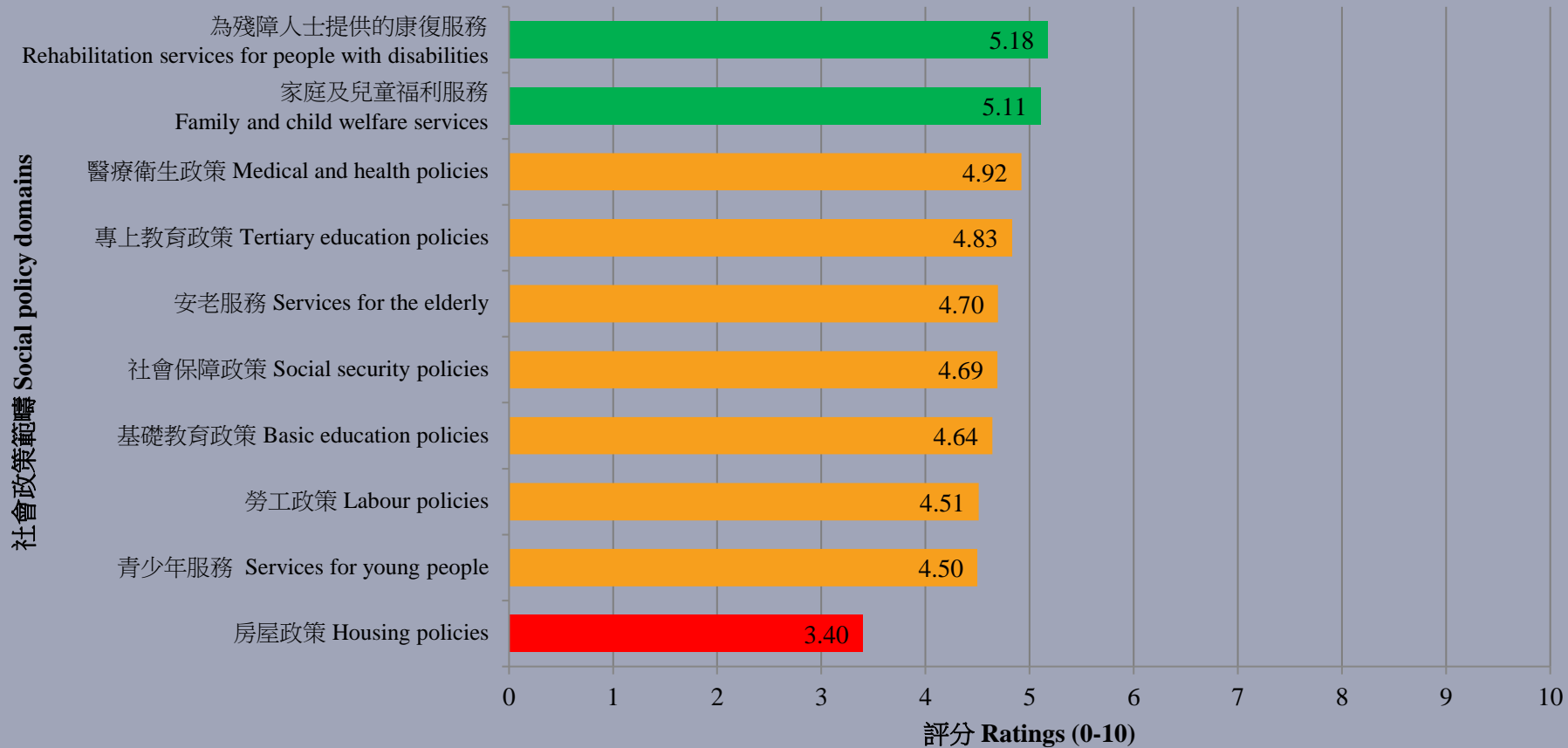
- **People's latest satisfaction ratings of various social policy domains**

	18-22/10/2021
Rehabilitation services for people with disabilities	5.18
Family and child welfare services	5.11
Medical and health policies	4.92
Tertiary education policies	4.83
Services for the elderly	4.70
Social security policies	4.69
Basic education policies	4.64
Labour policies	4.51
Services for young people	4.50
Housing policies	3.40

Survey Result - Appraisals of Social Policies

11

市民對不同社會政策範疇的最新滿意程度 People's latest satisfaction ratings of various social policy domains



Survey Result - Appraisals of Social Policies

12

- **People's latest satisfaction ratings of various social policy domains**
 - Our survey shows that, among the 10 specific social policy domains, people were most satisfied with the **rehabilitation services for people with disabilities** as well as **family and child welfare services**. On a scale of 0 to 10, their satisfaction scores are 5.18 and 5.11 respectively.
 - All remaining social policies score lower than 5. Ranked from highest to lowest are **medical and health policies**, **tertiary education policies**, **services for the elderly**, **social security policies**, **basic education policies**, **labour policies** and **services for young people**. Their mean scores range from 4.50 to 4.92.
 - **Housing policies** received the poorest satisfaction rating, with a mean score of 3.40 only.